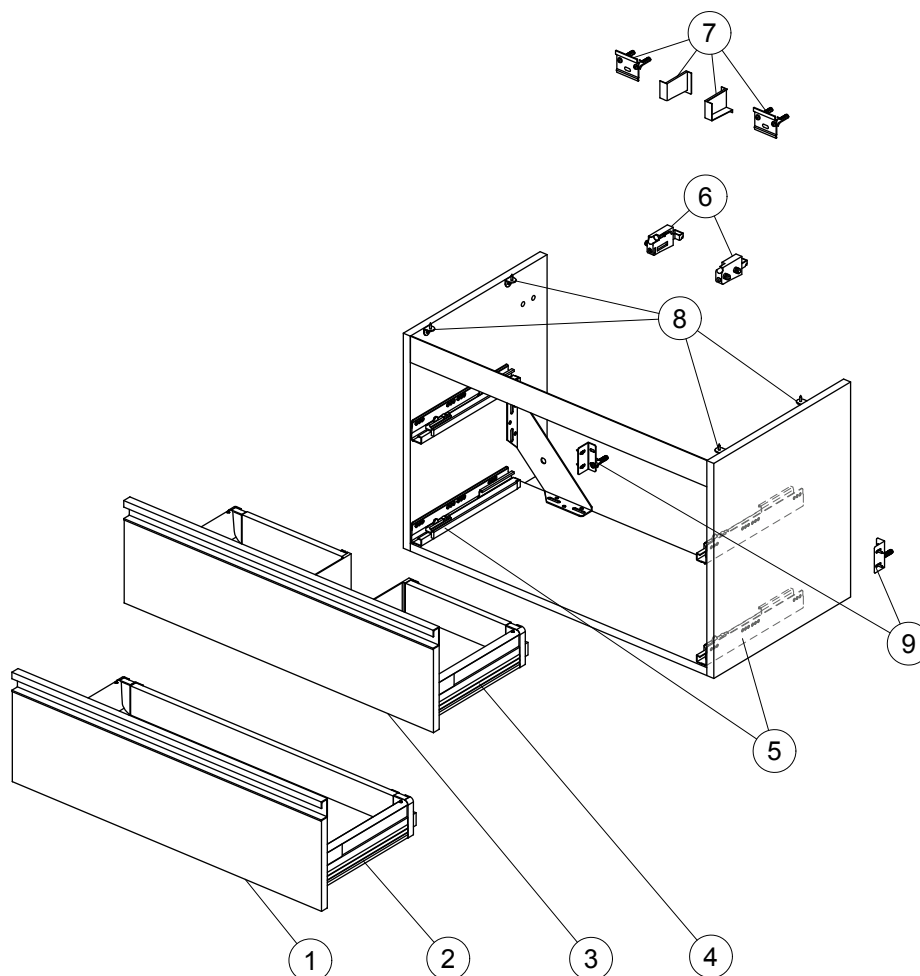


Item	Description	Colour/Finish		Code No.	Quantity
		Furniture Finish	Handle Finish		
1	Lower Drawer Front Panel with handle 80	OV - Glossy White PH - Glossy Light Grey WI - Matt Avio VI - Light Wood PU - Dark Taupe	Matt White Matt Light Gray Matt Light Gray Matt Light Gray Matt Dark Taupe	TV367OV TV367PH TV367WI TV367VI TV367PU	1
2	Drawer structure 2 drw 80 low *			TV36967	1
3	Upper Drawer Front Panel with handle 80	OV - Glossy White PH - Glossy Light Grey WI - Matt Avio VI - Light Wood PU - Dark Taupe	Matt White Matt Light Gray Matt Light Gray Matt Light Gray Matt Dark Taupe	TV366OV TV366PH TV366WI TV366VI TV366PU	1
4	Drawer structure 2 drw 80 up *			TV36867	1
5	Runner 300 KIT			TV38467	pair
6	Hanging brackets KIT 1			RV08267	pair
7	Wall fixation KIT 1			RV08167	12
8	TOP brackets (brackets & screws)			TV38367	12
9	Safety KIT (brackets, screws & plugs)			TV38767	12

* Plastic drawer structure in grey colour.
 Manufactured pre November 2017.
 Manufacturer traceability code 9999.



Item	Description	Colour/Finish		Code No.	Quantity
		Furniture Finish	Handle Finish		
1	Lower Drawer Front Panel Blum with handle 80	OV - Glossy White PH - Glossy Light Grey WI - Matt Avio VI - Light Wood PU - Dark Taupe	Matt White Matt Light Gray Matt Light Gray Matt Light Gray Matt Dark Taupe	TV658OV TV658PH TV658WI TV658VI TV658PU	1
2	Drawer structure 2 drw Blum 80 low *			TV66067	1
3	Upper Drawer Front Panel Blum with handle 80	OV - Glossy White PH - Glossy Light Grey WI - Matt Avio VI - Light Wood PU - Dark Taupe	Matt White Matt Light Gray Matt Light Gray Matt Light Gray Matt Dark Taupe	TV657OV TV657PH TV657WI TV657VI TV657PU	1
4	Drawer structure 2 drw Blum 80 up *			TV65967	1
5	Runner 300 KIT Blum			RV07467	pair
6	Hanging brackets KIT 1			RV08267	pair
7	Wall fixation KIT 1			RV08167	12
8	TOP brackets (brackets & screws)			TV38367	12
9	Safety KIT (brackets, screws & plugs)			TV38767	12

* Drawer structure with metal sides in white colour.
 Manufactured post October 2017.
 Manufacturer traceability code 9999.