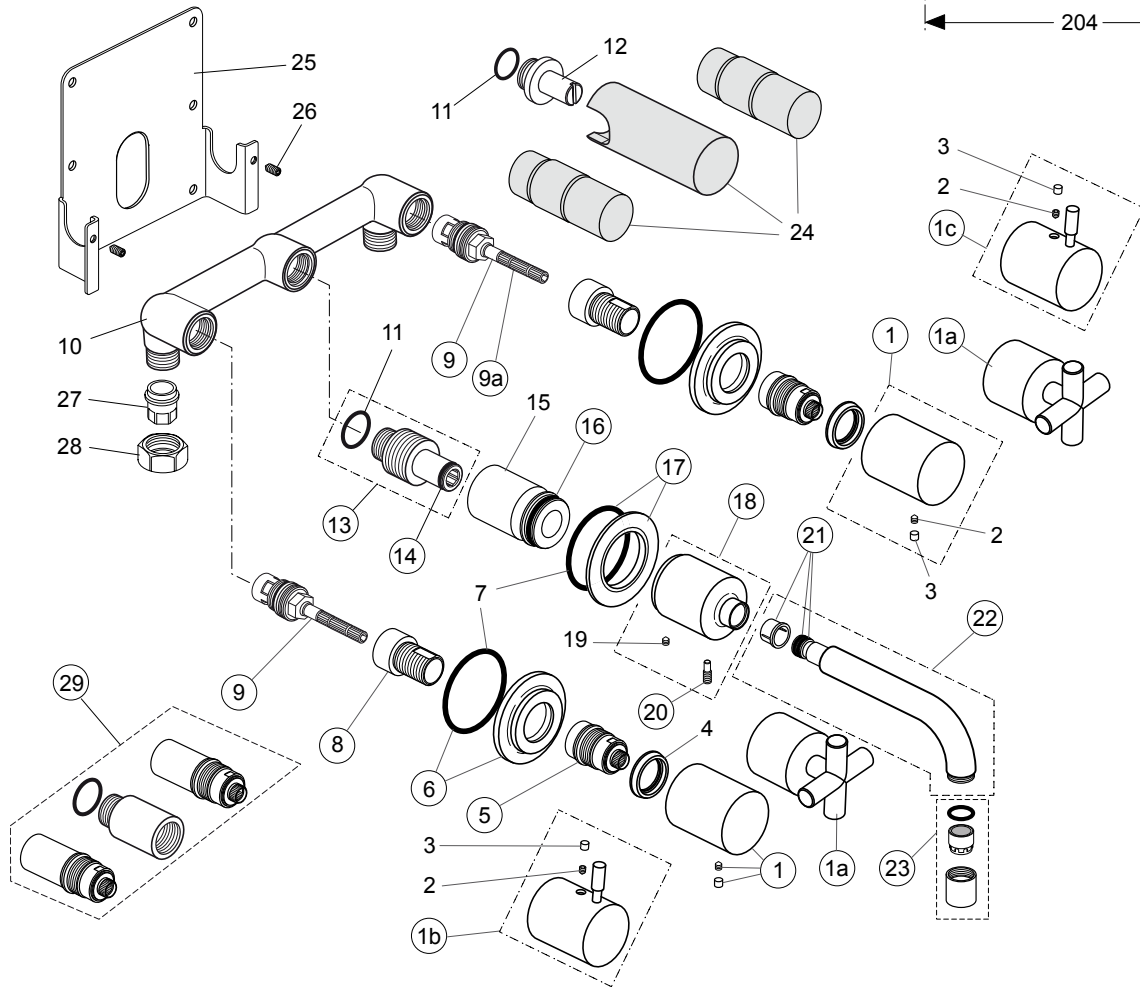
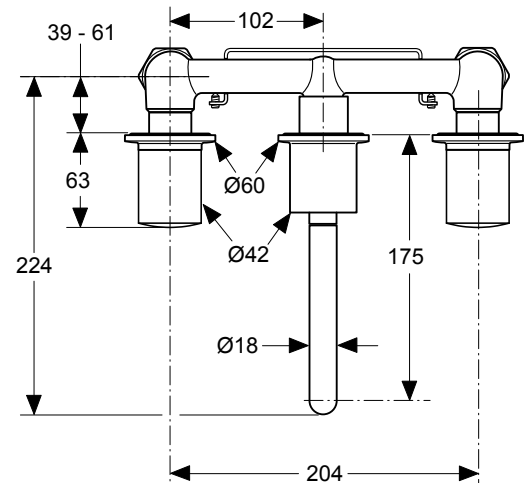


Produced from:

- 899/997/000/999 Pre-installation kit to handle 1b & 1c **H3916NU**
- 899/998/000/999 Pre-installation kit to handle 1 & 1a **H3918NU**
- 832/175/000... Wall mounted Lavy / set 2 / Design parts with cylindr. handle until end of 2009 with IQ handle since 2010 - chrome **H2049AA**
- 832/375/000... chrome, with cross handle **H2059AA**
- 832/140/000... Wall mounted Lavy / complete fitting chrome, with cylindr. handle **H2634AA**
- 832/340/000... chrome, with cross handle **H2635AA**



Pos.	Description	Part-Number	Qty.	Pos.	Description	Part-Number	Qty.
1	Cylindrical handle cpl.	H 961 653 AA	1 pcs	14	O-ring Ø 13 x 2,5	A 962 728 NU	2 pcs
1a	Cross handle complete	A 961 488 AA	1 pcs	15	Connector		
1b	Handle IQ cpl. red	A 962 468 AA	1 pcs	16	O-ring Ø 28 x 3	A 960 071 NU	2 pcs
1c	Handle IQ cpl. blue	A 962 469 AA	1 pcs	17	Escutcheon complete	H 961 619 AA	1 pcs
2	Thread pin			18	Cover complete	A 961 489 AA	1 pcs
3	Cap			19	Thread pin M5x6 DIN914		
4	Conical ring Ø 30/28 x 5			20	Thread pin M5	A 961 479 NU	1 set
5	Sleeve	H 960 836 NU	1 pcs	21	Glide ring with o-ring	H 960 788 NU	1 pcs
6	Escutcheon with o-ring	H 960 859 AA	1 pcs	22	Spout	H 960 822 AA	1 pcs.
7	O-ring Ø 48 x 3			23	Aerator M17x1 complete	H 961 820 AA	1 pcs
8	Extension adapter	H 960 855 NU	1 pcs	24	Plaster template		
9	Headwork G1/2 right clos.	H 960 520 NU	1 pcs	25	Holder for body fixation		
9a	Headwork G1/2 left closed	H 960 521 NU	1 pcs	26	Thread pin M5x10 DIN914		
10	Built-in body (Lavy)			27	Nipple G1/2		
11	O-ring Ø 18 x 2			28	Coupling nut		
12	Plug			29	Extension kit 25mm	H 960 740 NU	1 pcs
13	Nipple complete	A 960 250 NU	1 pcs.				