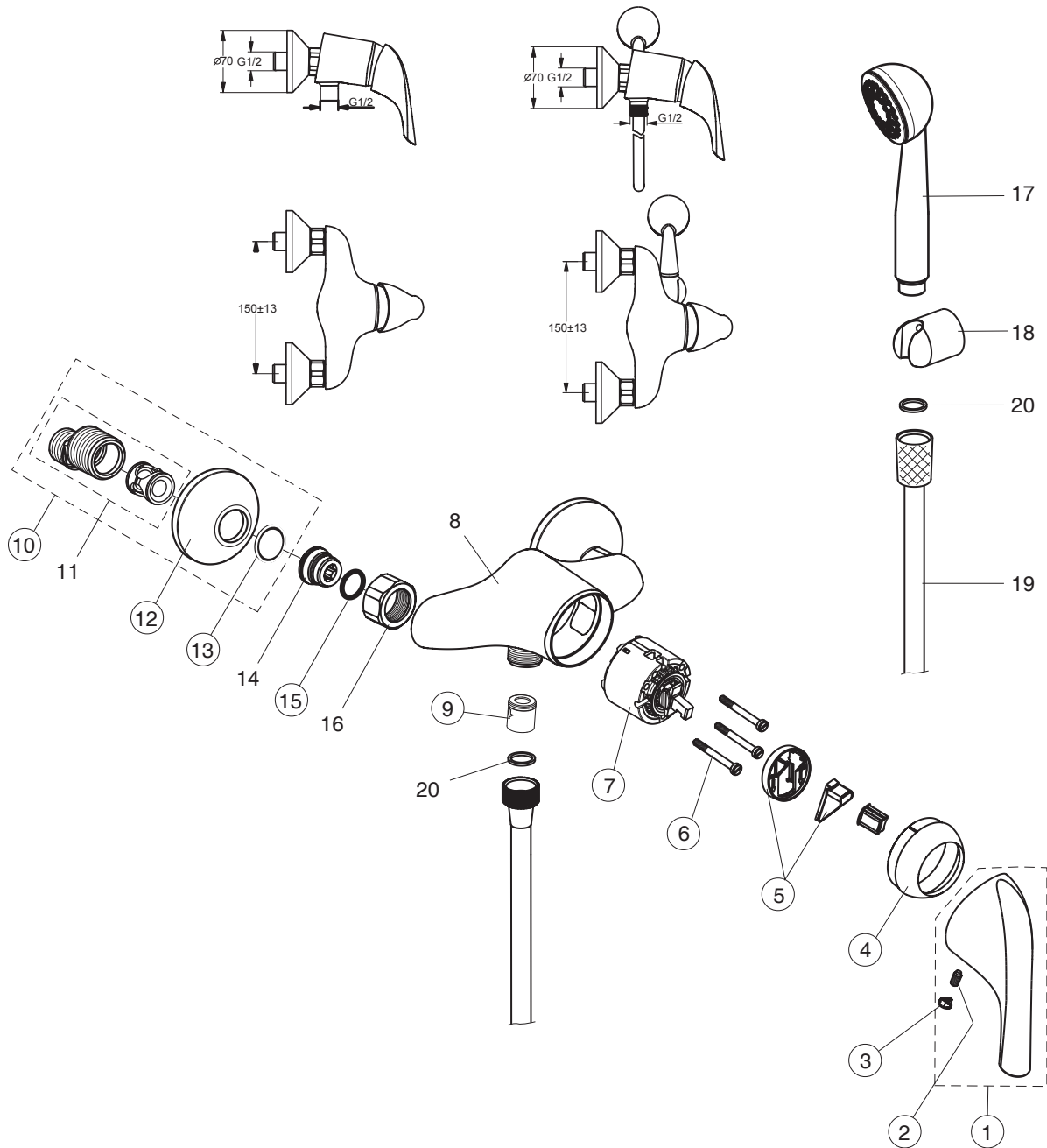


(B3699AA;B4527AA;
CERAPLAN NEW B8522AA)



| Pos. | Signify | Spare parts-Nr. | Quantity | Pos. | Signify | Spare parts-Nr. | Quantity |
|------|-------------------------------------|-----------------|----------|------|---|-----------------|----------|
| 1 | Lever,w/logo ISI-compl. | B960704AA | 1 Pcs. | 13 | Fibre washer for non-return valve | A961139NU | 2 Pcs. |
| 2 | Lever,w/logo-BGFG-compl. | B960512AA | 1 Pcs. | 14 | Nipple M19x1.5LH | | 2 Pcs. |
| 3 | Handle screw M5x10 | A963309NU | 1 Pcs. | 15 | O-Ring $\varnothing 15.6 \times 1.78$ | A961182NU | 2 Pcs. |
| 4 | Cap(Blue/Red) | A963054NU | 1 Pcs. | 16 | Coupling nut | | 2 Pcs. |
| 5 | Cap CERAPLAN | A964525AA | 1 Pcs. | 17 | Shower Tosca 2 functional w/logo ISI | | 1 Pcs. |
| 6 | Volume stop | A860700NU | 1 Pcs. | | | | |
| 7 | Screw M4x39 | A963176NU | 3 Pcs. | 18 | Wall bracket fixed NIKLES | | 1 Pcs. |
| 8 | Cartridge $\varnothing 47\text{mm}$ | A960500NU | 1 Pcs. | 19 | Metal hose,L1500,double clenched | | 1 Pcs. |
| 9 | Body shower | A962594NU | 1 Pcs. | 20 | Fiberring $\varnothing 16 \times 13 \times 1.5$ | | 2 Pcs. |
| 10 | Non return valve | A962594NU | 1 Pcs. | | | | |
| 11 | S-connection compl. | A963490AA | 1 Pcs. | | | | |
| 12 | S-connector G3/4 | A963489AA | 2 Pcs. | | | | |
| 13 | Rosette | | 1 Pcs. | | | | |