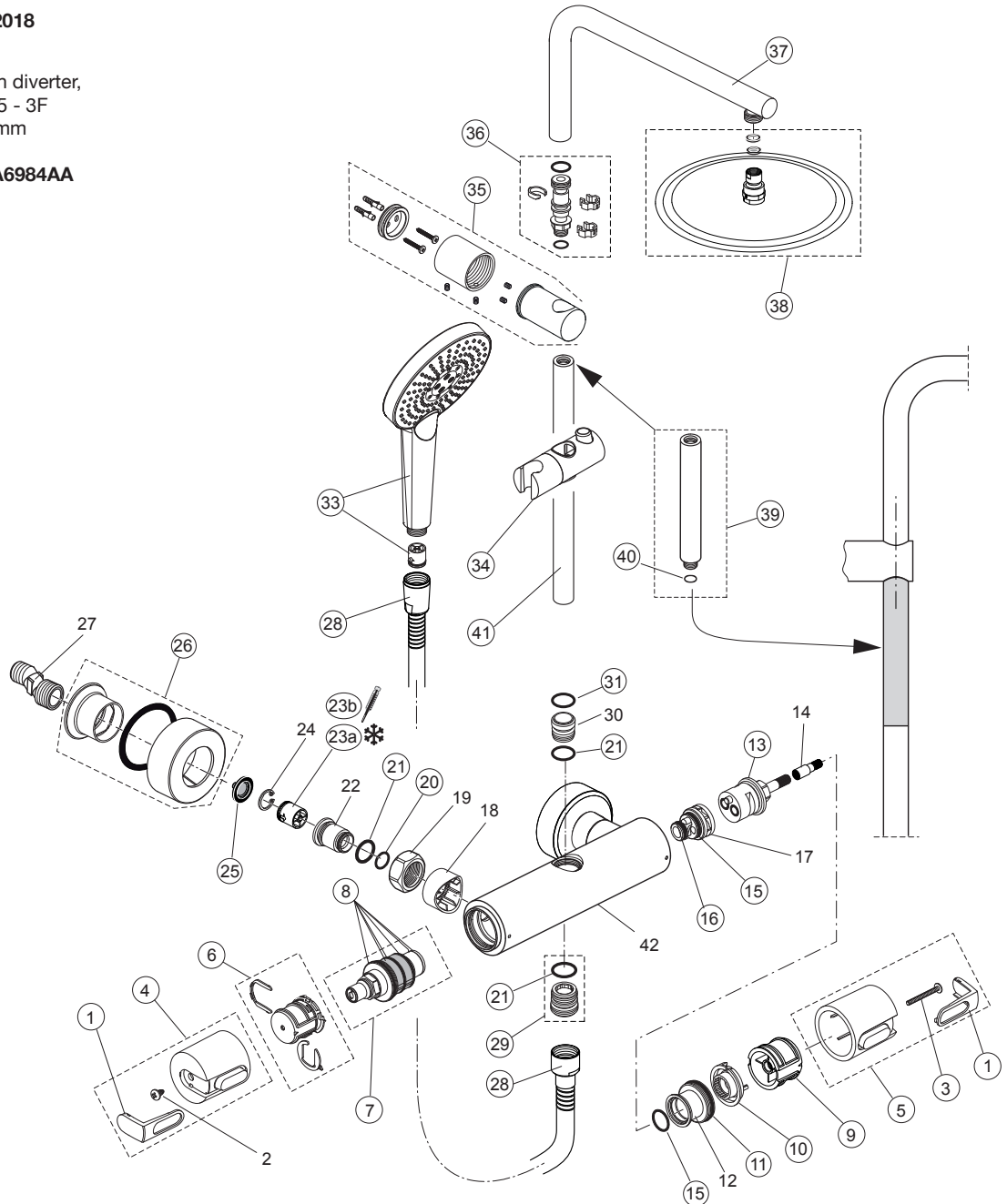


Produced from: **June 2018**

Shower Thermostat with diverter,  
slide bar, handspray 125 - 3F  
and Rainshower Ø 300mm

chrome **A6984AA**



Pos.	Description	Part-Number	Qty.	Pos.	Description	Part-Number	Qty.
1	Handle cap w. and w/o Logo	<b>A 962 872 AA*</b>	1 Set	23a	Non-return valve DW15CW	<b>A 962 594 NU</b>	2 pcs
2	Screw Ejot PT KB50x10			23b	Non-return valve DW15HW	<b>F 960 942 NU</b>	1 pcs
3	Screw M4 L=40	<b>A 861 298 NU</b>	2 pcs	24	Lock Ring		
4	Handle for Temperature	<b>A 860 951 AA</b>	1 Set	25	Strainer ( screen )	<b>A 962 595 NU</b>	2 pcs
5	Handle for Volume control	<b>A 861 296 AA*</b>	1 Set	26	Escutcheon cpl.	<b>B 961 016 AA</b>	2 Set.
6	Temp. adjustment cpl.	<b>A 963 427 NU*</b>	1 Set	27	S-Connector		
7	Thermostatic Cartridge	<b>A 962 229 NU</b>	1 Set	28	Shower hose 1750 mm	<b>A 4109 AA</b>	1 pcs
8	Repair-Set Cartridge	<b>A 962 230 NU</b>	1 Set	29	Nipple G1/2 outside cpl.	<b>A 963 651 NU</b>	1 pcs
9	Handle insert ( Set )	<b>A 963 432 NU*</b>	1 Set	30	Connector nipple shower bar		
10	Volume control stop ring	<b>A 962 563 NU*</b>	1 pcs	31	O - ring Ø 18,7 x 2,6	<b>A 860 933 NU</b>	1 Set
11	O - ring Ø 18 x 2	<b>A 963 299 NU</b>	1 Set	33	Handspray	<b>B 1759 AA</b>	1 pcs
12	Thread ring M34 x 1,5			34	Slider & holder f. handshr.	<b>A 860 807 AA</b>	1 Set
13	Stop valve with diverter	<b>A 962 568 NU*</b>	1 pcs	35	Wall fixation complete	<b>F 960 891 AA</b>	1 Set
14	Extension			36	Connector nipple cpl.	<b>F 961 042 NU</b>	1 Set
15	O - ring Ø 18,77 x 1,78	<b>A 962 529 NU</b>	1 pcs	37	Pipe (bend)	<b>F 961 149 AA</b>	1 pcs
16	O - ring Ø 12,42 x 1,78	<b>A 961 332 NU</b>	2 pcs	38	Headshower cpl.	<b>B 0385 MY</b>	1 pcs
17	Manifold diverter			39	Extension kit 150mm long	<b>A 860 873 AA</b>	1 pcs
18	Escutcheon			40	O - ring	<b>A 961 332 NU</b>	1 pcs
19	Coupling nut G3/4			41	Shower bar	<b>A 861 144 AA</b>	1 pcs
20	O - ring Ø 14 x 1,78	<b>A 961 810 NU</b>	2 pcs	42	Body		
21	O - ring Ø 17 x 2	<b>F 960 894 NU</b>	2 pcs				
22	Seat M20x1 left thread						

\*Universal set (not all parts needed)